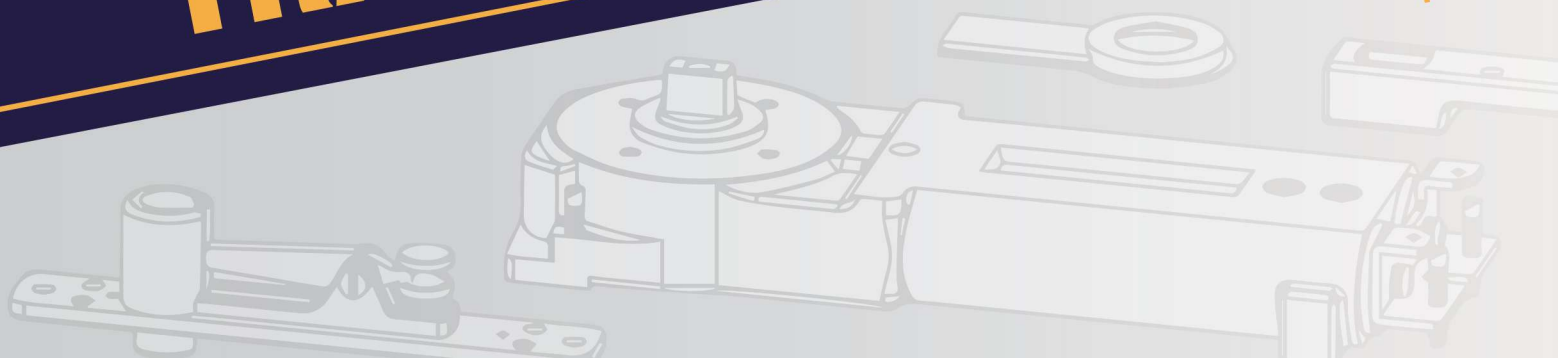




**CATALOG**  
**CHIEN CHIN PRECISION CO., LTD**

**FLOOR SPRING  
TRANSOM CLOSER**





# PIVOT DOOR CLOSER

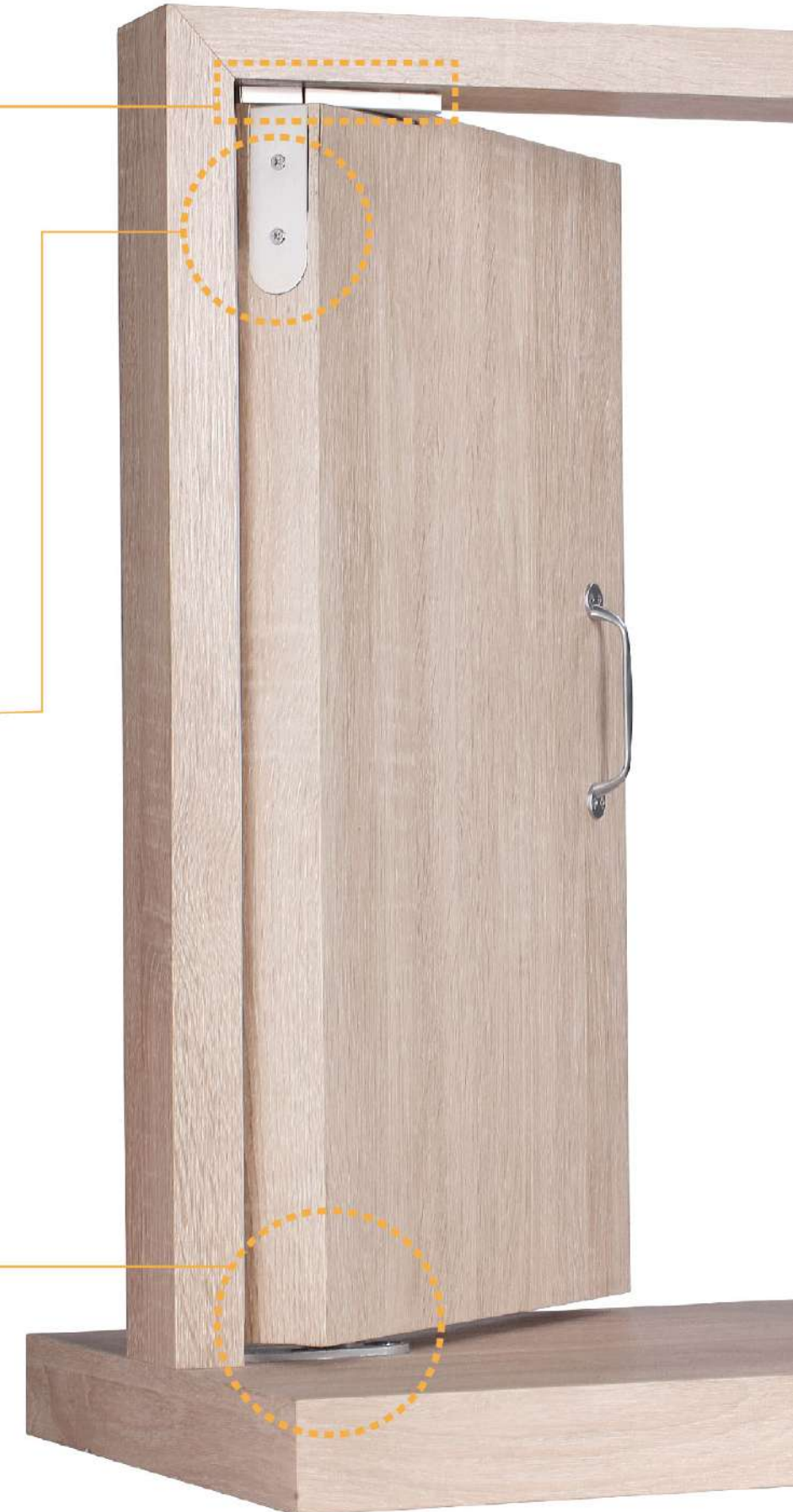
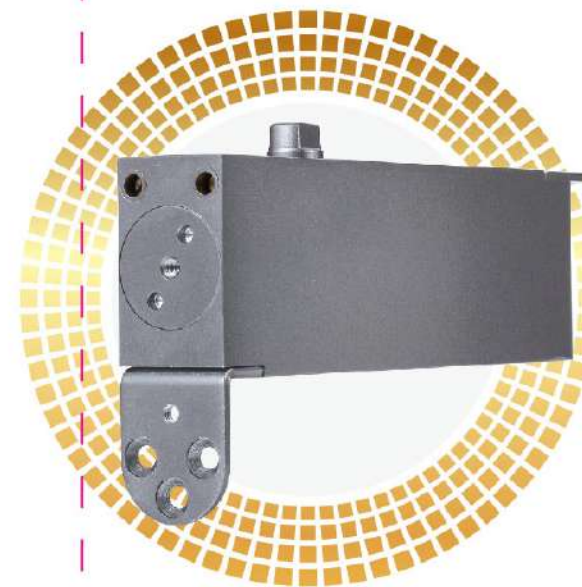
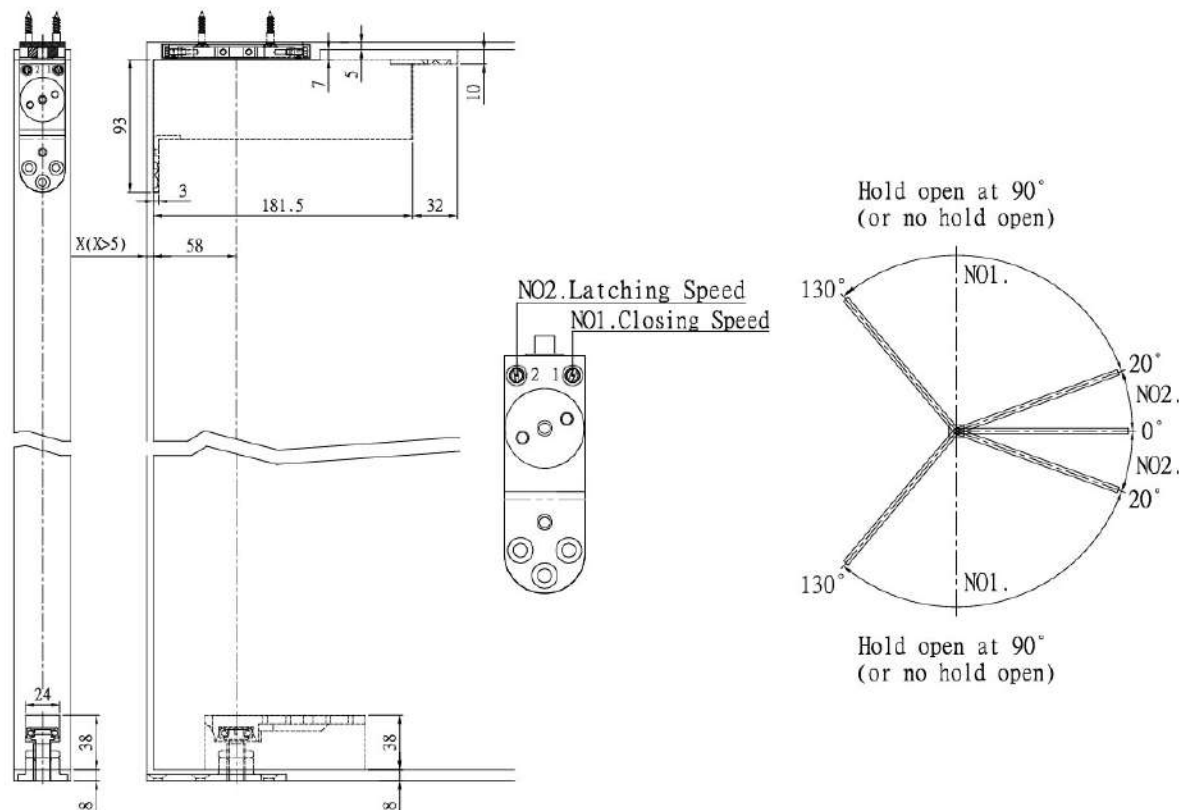
**W160** TYPE

## TECHNICAL DATA

Closing force	EN3
Max Door width (mm)	1100
Max Door open angle	130°
Max Door weight (kg)	100
Function	No hold open and Hold open 90°

## FEATURES :

- Top loading  
Increase the durability of the product, and opening the door more efficiently.  
Reduce the load on the pivot door closer.
- This slim concealed pivot door closer can be installed in timber or aluminum doors with a minimum thickness of 40mm.
- Easy installation ; costs and time saving as no preparation on the floor needed.
- Low opening resistance and high closing efficiency.
- Simple final adjustments, 3mm backward/forward, 3mm left/right,  $\pm 4^\circ$  alignment.
- The closing speed is easily adjusted via two independent adjustment valves.
- Ambient temperature  $-20^\circ\text{C} \sim +40^\circ\text{C}$ .



**PIVOT DOOR CLOSER**



# FLOOR SPRING

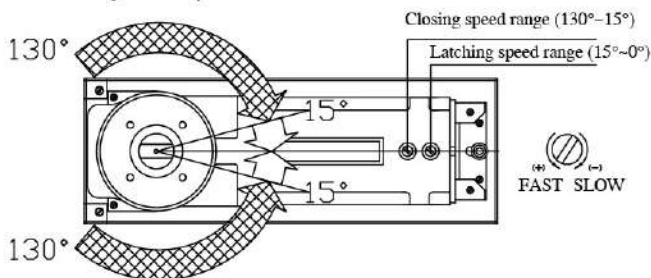
# S200 TYPE

## TECHNICAL DATA

Closing force	EN2	EN3	EN4
Door width(mm)	850	950	1100
Door weight (Kg)	60	80	100
Dimensions of cement case (mm)	L306 x W108 x H40		
Adjustment in cement case (mm)	L7 x W10 x H4		
Dimensions cover plate (mm)	L324 x W130 x H1		

## FEATURES :

- Suitable for single & double action doors.
- Maximum door width 1100mm, maximum door weight 100 kgs. maximum door opening angle 130°.
- Available for hold open 90°, 105°, no hold open.
- The speed adjustment valves can not be backed out of floor spring when adjustment, that eliminates oil leakage from the valves.
- Reduced thickness of 40mm only safely for thinner slab.
- Adjustment valves of closing speed and latching speed are fully independent.



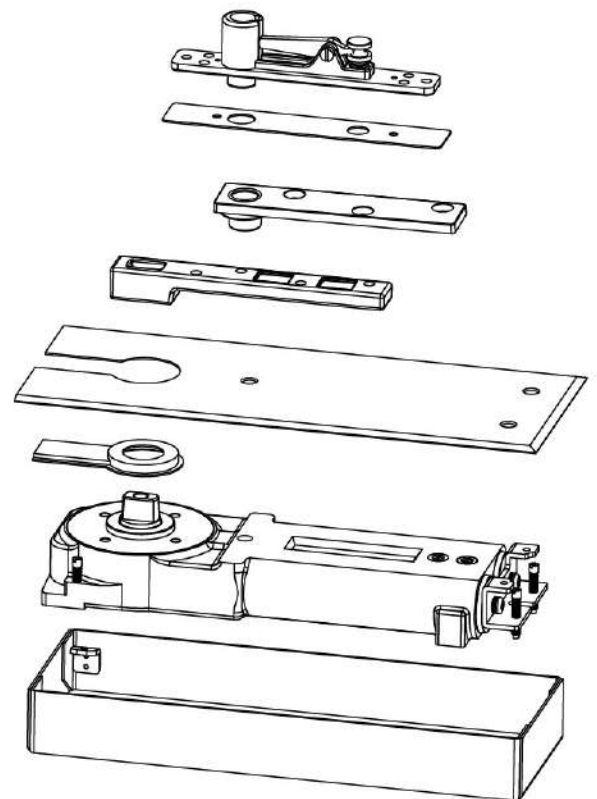
- The spindle optional: Fixed and Exchangeable.

### Accessories

- Standard Arm available.
- Offset Arm available.
- Adjustable Top Pivot available.

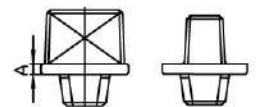
### Universal cover plate:

- Satin Stainless Steel
- Polished Stainless Steel



### Exchangeable spindle extension:

Dimension (A)	3 mm	8 mm	13 mm	18 mm	23 mm	28 mm	33 mm	38 mm	43 mm	48 mm	53 mm
Spindle Extension	Standard	5 mm	10 mm	15 mm	20 mm	25 mm	30 mm	35 mm	40 mm	45 mm	50 mm

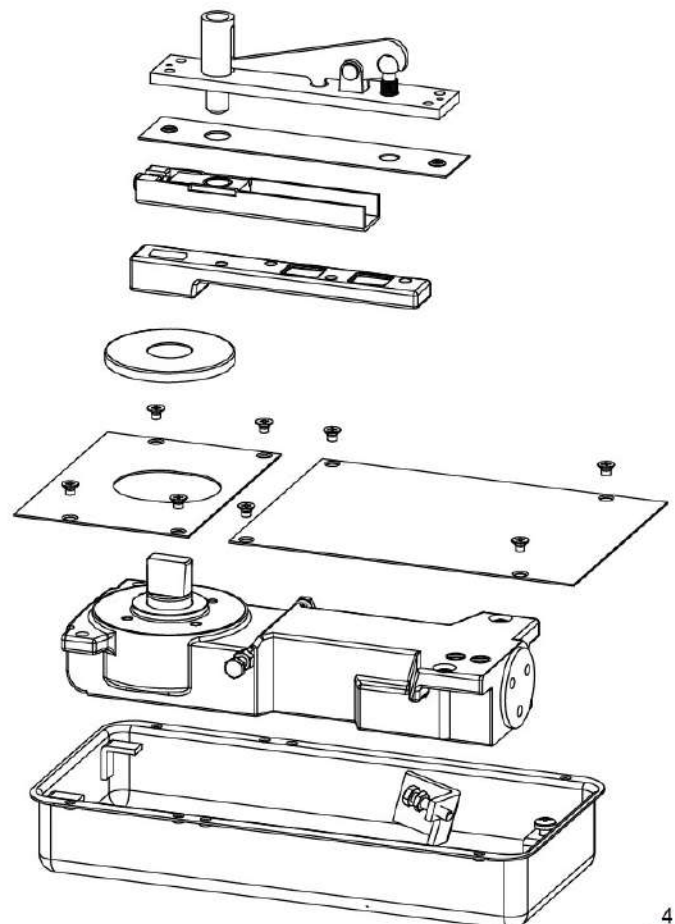
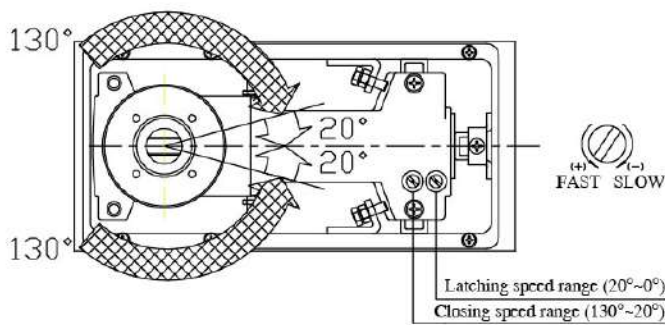


## TECHNICAL DATA

Closing force	EN2	EN3
Door width(mm)	850	950
Door weight (Kg)	60	80
Dimensions of cement case (mm)	L297 x W145 x H48	
Adjustment in cement case (mm)	L6 x W6	
Dimensions cover plate (mm)	L308 x W146 x H1	

## FEATURES :

- Suitable for single & double action doors.
- Maximum door width 950mm, maximum door weight 80 kgs.  
maximum door opening 130°.
- Available for hold open 90°, no hold open.
- The speed adjustment valves can not be backed out of floor spring when adjustment ,  
that eliminates oil leakage from the valves.
- Adjustment valves of closing speed and latching speed are fully independent .
- Two -piece cover plate , easy to adjust the center of the door and closing speed .
- The screws on both sides to strengthen and increase the stability of the door after the  
installation .



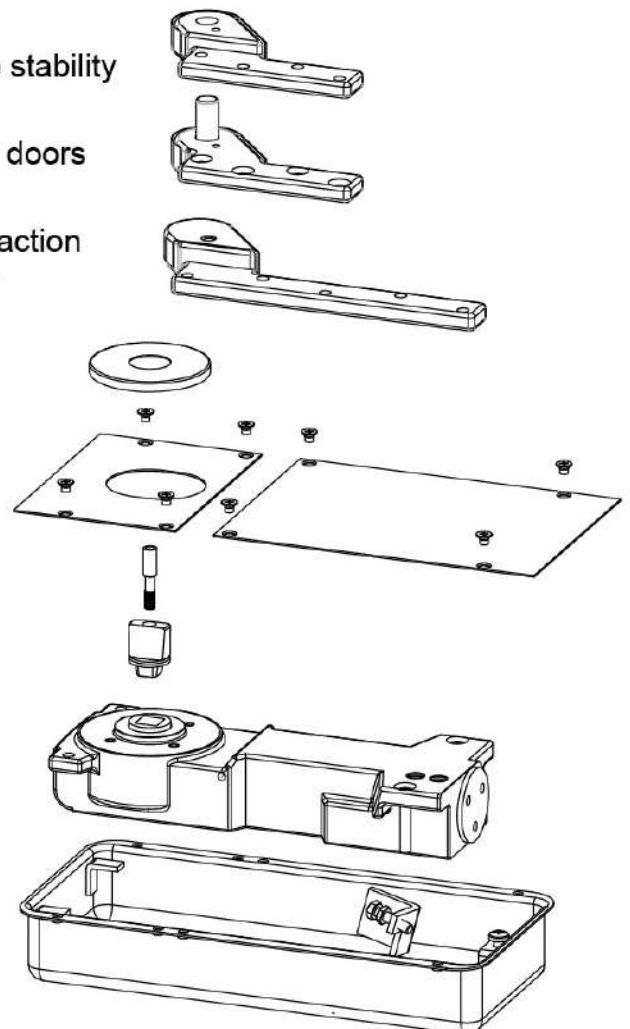
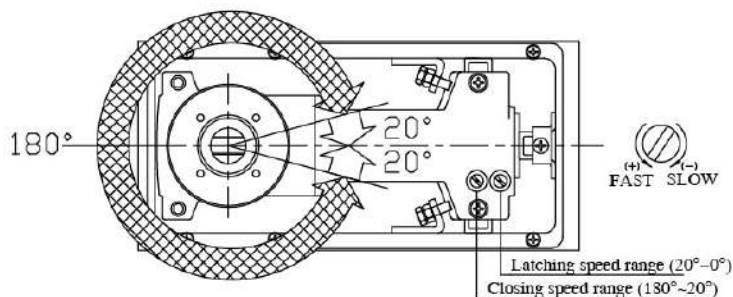


## TECHNICAL DATA

Closing force	EN2	EN3	EN4
Door width(mm)	850	950	1100
Door weight (Kg)	100	150	200
Dimensions of cement case (mm)	L297 x W145 x H48		
Adjustment in cement case (mm)	L6 x W6		
Dimensions cover plate (mm)	L308 x W146 x H1		

## FEATURES :

- Suitable for single & double action doors.
- Maximum door width 1100mm, Maximum door weight 200 kgs, Maximum door opening 180°.
- Available for no hold open of fire doors.
- The speed adjustment valves can not be backed out of Floor Spring when adjustment , that eliminates oil leakage from the valves.
- Adjustment valves of closing speed and latching speed are fully independent .
- Two -piece cover plate , easy to adjust the center of the door and closing speed .
- The screws on both sides to strengthen and increase the stability of the door after the installation .
- The spindle optional regulations applicable to all kinds of doors and flooring needs .
- The fire doors available for door opening 180° of double action door (wall) or for door opening 190° of single action door (electromagnetic buckle).

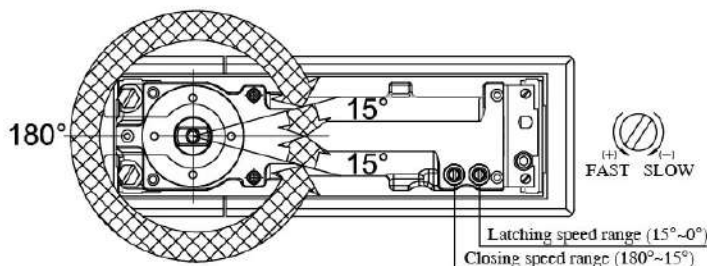
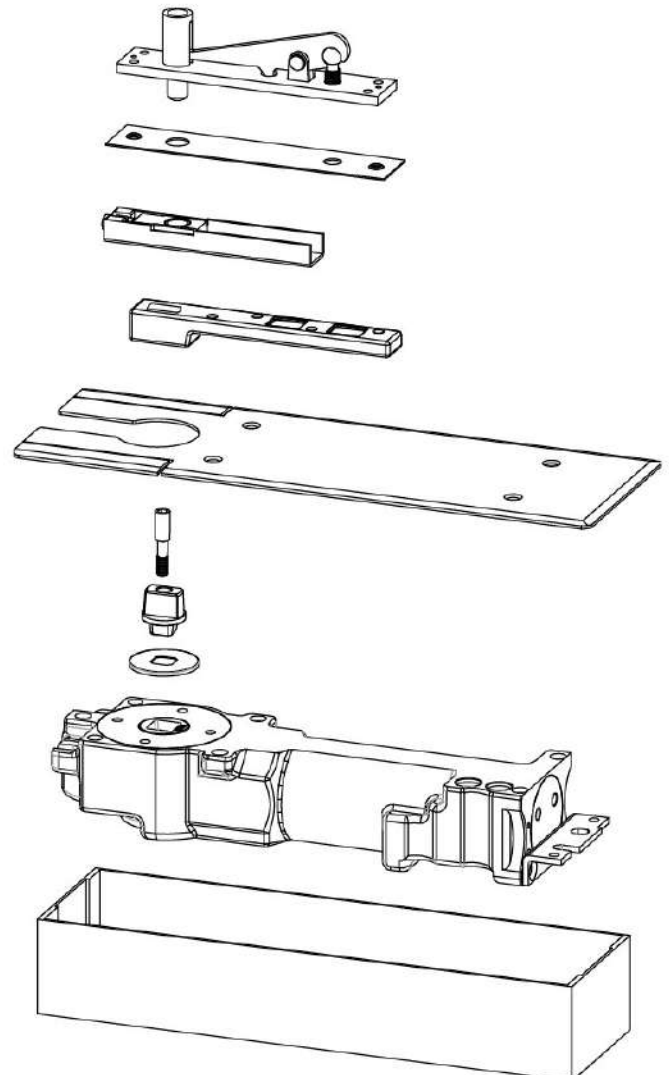


## TECHNICAL DATA

Closing force	EN2	EN3	EN4
Door width(mm)	850	950	1100
Door weight (Kg)	100	150	200
Dimensions of cement case (mm)	L285 x W82 x H50		
Adjustment in cement case (mm)	L8 x W10		
Dimensions cover plate (mm)	L308 x W105 x H1.5		

## FEATURES :

- Suitable for single & double action doors.
- Maximum door width 1100mm, Maximum door weight 200 kgs, Maximum door opening 180°.
- The speed adjustment valves can not be backed out of Floor Spring when adjustment , that eliminates oil leakage from the valves.
- Adjustment valves of closing speed and latching speed are fully independent .
- Available for no hold open of fire doors.
- The closing speed range 180°~15°.
- The latching speed range 15°~0°.
- The spring force is fixed number of options.



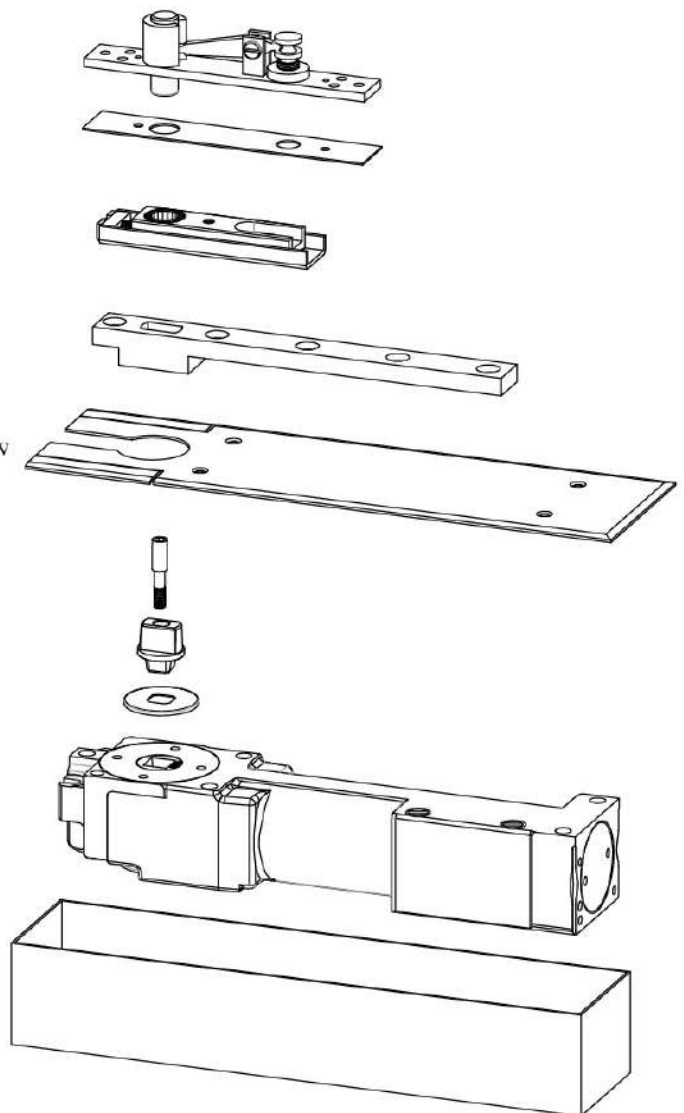
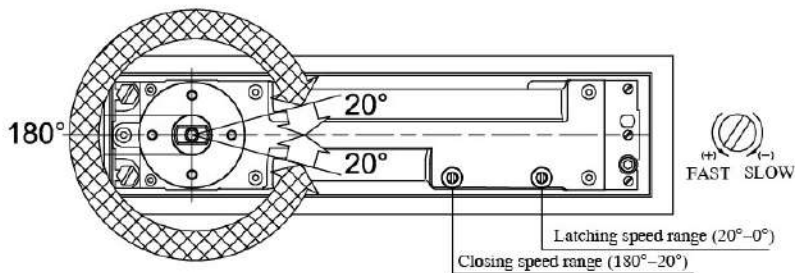


## TECHNICAL DATA

Closing force	EN4	EN6
Door width(mm)	1100	1400
Door weight (Kg)	200	300
Dimensions of cement case (mm)	L341 x W78 x H60	
Adjustment in cement case (mm)	L6 x W6	
Dimensions cover plate (mm)	L358 x W105 x H1.5	

## FEATURES :

- Suitable for single & double action doors.
- Maximum door width 1400mm, Maximum door weight 300 kgs, Maximum door opening 180°.
- Available for no hold open of fire doors.
- The closing speed range 180°~20°.  
The latching speed range 20°~0°.
- Back check function .
- The spring force is fixed number of options.



# OVERHEAD CONCEALED CLOSERS

## TECHNICAL DATA

Closing force	EN2	EN3	EN4
Door width(mm)	850	950	1100
Maximum Opening	130°	130°	130°
Hold Open	Hold open 90°, 105° and no hold open		

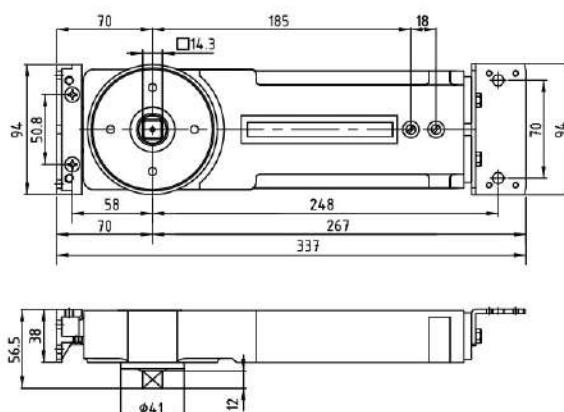
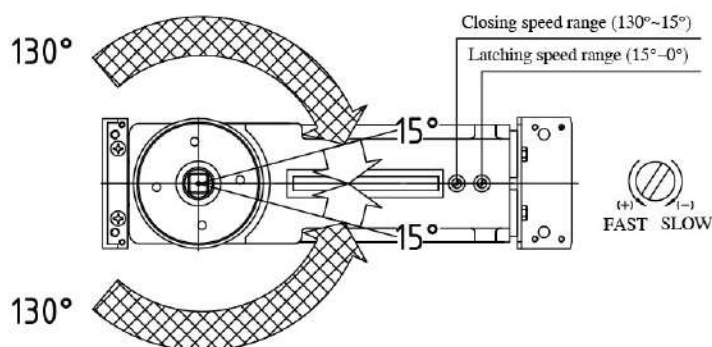
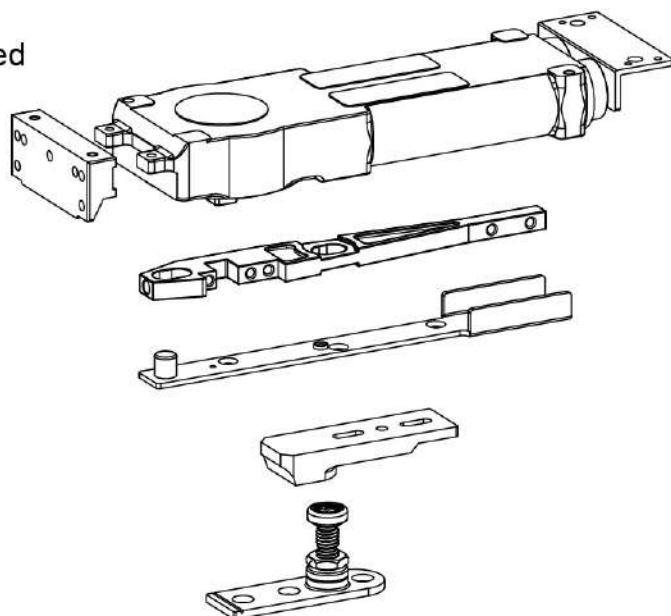
## T500E TYPE

## FEATURES :

- Suitable for single & double action doors.
- Maximum door weight 100 kgs.
- The speed adjustment valves can not be backed out of transom closer when adjustment, that eliminates oil leakage from the valves.
- Adjustment valves of closing speed and latching speed are fully independent.
- The extended spindle can be lengthened 5mm and 10mm.

## Accessories

- SIDE LOAD ARM.
- END LOAD ARM .
- STANDARD BOTTOM PIVOT.





## OVERHEAD CONCEALED CLOSERS

## TECHNICAL DATA

Closing force	EN1~4
Door width(mm)	750~1100
Maximum Opening	130°
Hold Open	No hold open and Hold open 90°

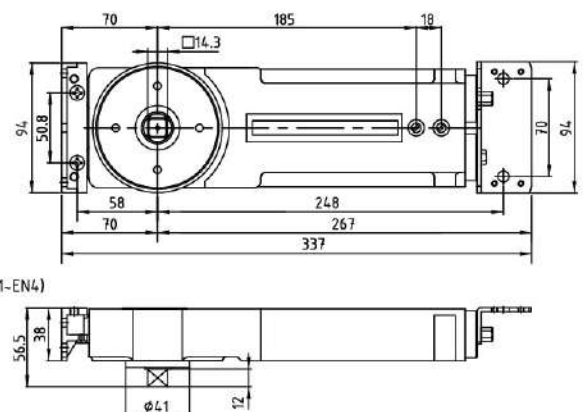
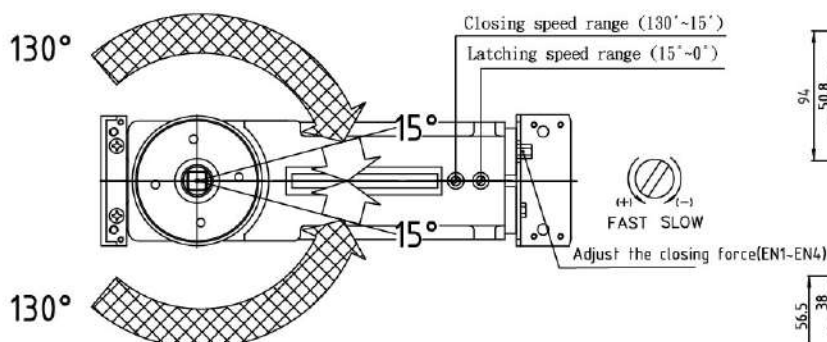
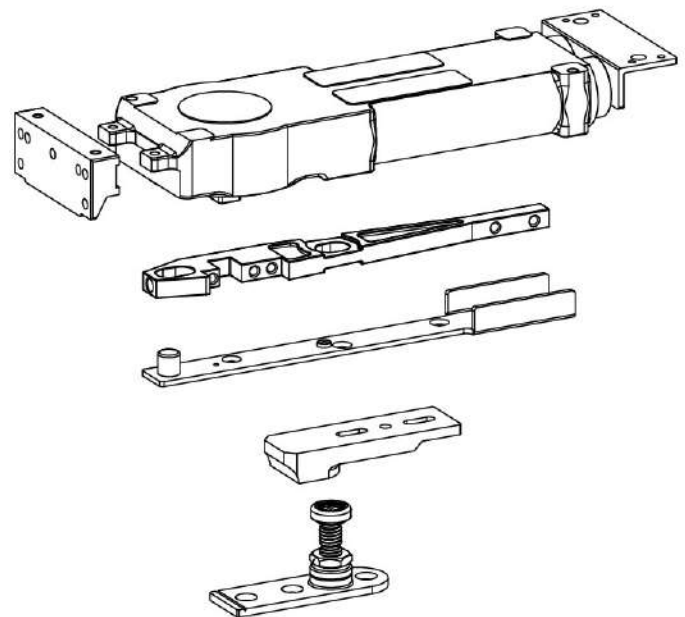
# T500A TYPE

## FEATURES :

- Adjustment closing force EN1~EN4.
  - Hold open degree at 90° or No hold open.
  - The maximum opening angle is 130°.
- Suitable for single & double action doors.
- Maximum door weight 100 kgs.
  - The speed adjustment valves can not be backed out of Transom Closer when adjustment, that eliminates oil leakage from the valves.
  - Adjustment valves of closing speed and latching speed are fully independent.
  - The extended spindle can be lengthened 5mm and 10mm.

## Accessories

- SIDE LOAD ARM.
- END LOAD ARM .
- STANDARD BOTTOM PIVOT.



# ACCESSORIES



▲ SIDE LOAD ARM  
500-AS



▲ END LOAD ARM  
500-XK



▲ SIDE LOAD ARM  
500-XS



▲ DOUBLE ACTION PIVOT  
200-1P



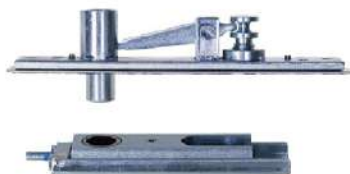
▲ DOUBLE ACTION PIVOT  
200-2P



▲ DOUBLE ACTION PIVOT  
200-3P



▲ DOUBLE ACTION PIVOT  
200-4P



▲ DOUBLE ACTION PIVOT  
200-5P



▲ DOUBLE ACTION ARM  
STANDARD 200-CA



▲ HEAVY OFFSET ARM



▲ OFFSET ARM



▲ DOUBLE ACTION ARM  
LENGTHEN 280-CA



▲ EXCHANGEABLE SPINDLE EXTENSION



▲ FLOOR MOUNT SPINDLE  
200-HP





CHIEN CHIN PRECISION CO.,LTD

WEBSITE : [cc-hardware.com.tw](http://cc-hardware.com.tw)

E-mail : [info@cc-hardware.com.tw](mailto:info@cc-hardware.com.tw)

TEL : +886-4-7369617 FAX : +886-4-7369657

ADDRESS : NO.4,Ln.354,Sec.2,Zhangmei Rd.,  
Hemei Township,  
Changhua County 508 Taiwan(R.O.C)